



GAT MONTHLY MEMBERSHIP PROGRESS REPORT

Results as of: 1/31/2024

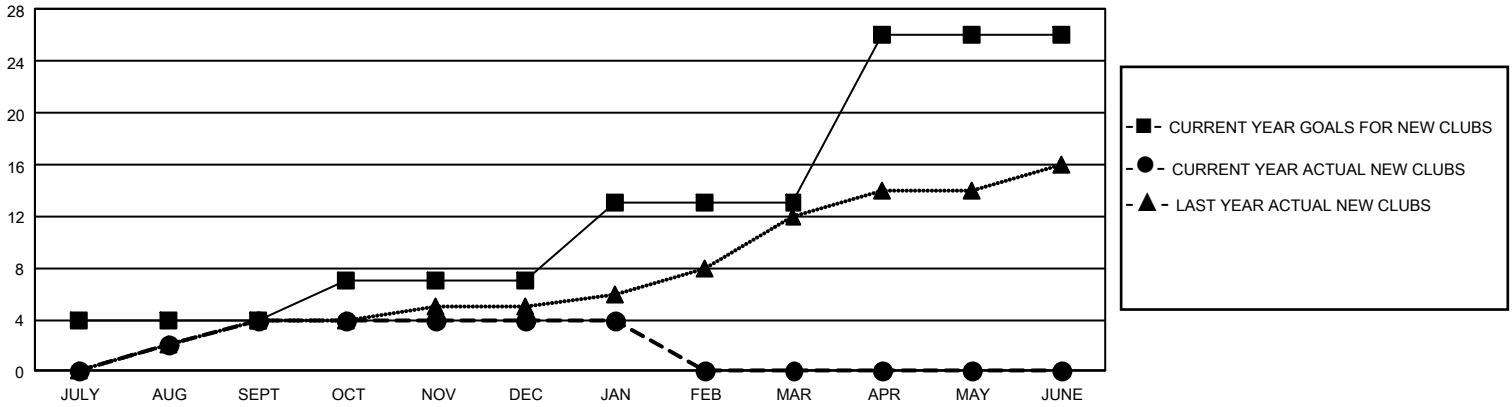
GMT Constitutional Area 7, Group A

REPORT DOES NOT INCLUDE CLUBS IN UNDISTRICTED AREAS.

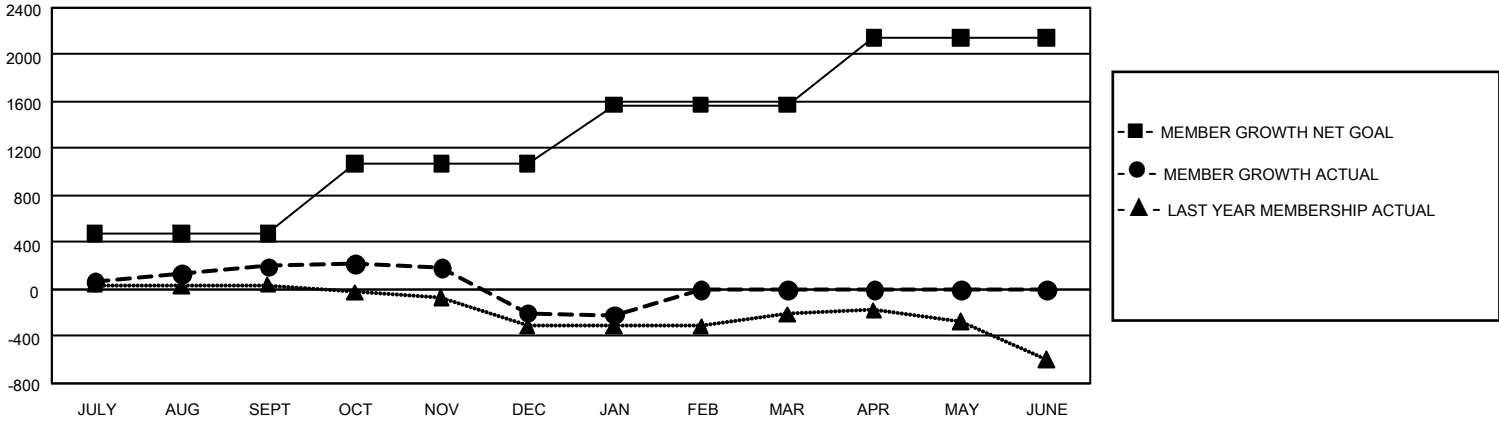
| Clubs | | | |
|-----------------------|---------------|-----------|---------------|
| RESULTS FOR 2023-2024 | | | |
| QUARTER | NEW CLUB GOAL | NEW CLUBS | DROPPED CLUBS |
| JULY/AUG/SEPT | 12 | 4 | 10 |
| OCT/NOV/DEC | 9 | 0 | 2 |
| JAN/FEB/MAR | 18 | 0 | 1 |
| APR/MAY/JUNE | 39 | 0 | 0 |

| Members | | | |
|-----------------------|------------------------|----------------------|--|
| RESULTS FOR 2023-2024 | | | |
| QUARTER | MEMBER GROWTH NET GOAL | MEMBER GROWTH ACTUAL | DROPPED MEMBERS ACTUAL (including transfers) |
| JULY/AUG/SEPT | 475 | 897 | 607 |
| OCT/NOV/DEC | 597 | 579 | 900 |
| JAN/FEB/MAR | 500 | 206 | 184 |
| APR/MAY/JUNE | 575 | 0 | 0 |

GOALS AND ACTUAL NEW CLUBS CUMULATIVE



GOALS AND ACTUAL MEMBERS CUMULATIVE



| | | | |
|--|--|--|--|
| DROPPED CLUBS: 13 | 560 CLUBS OF 1,151 ADDED 1 OR MORE NEW MEMBERS | GENDER DISTRIBUTION | |
| | | MALE 13,705 (61.71%) FEMALE 8,489 (38.22%) NON BINARY 5 (0.02%) PREFER NOT TO ANSWER 11 (0.05%) | |
| DROPPED MEMBERS | | CLICK HERE FOR CUMULATIVE MEMBERSHIP DATA | |
| DECEASED 191 CLUB CANCELLED 30 OTHER 1,470 TOTAL 1,691 | TOTAL FAMILY UNIT MEMBERS 3,413 FAMILY MEMBERS PAYING HALF DUES 1,737 | | |